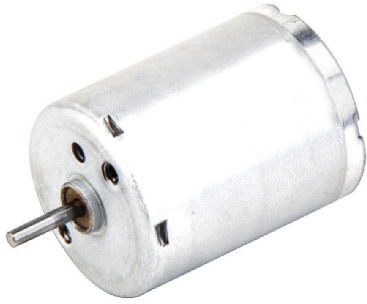


# PTRF-370C

PRECIOUS METAL BRUSHED DC MICRO MOTOR



24D x 31mmL (0.94D x 1.22inL)

VOLTAGE	3.0~12.0V
HOUSING LENGTH	30.8mm (1.21in)
DIAMETER	24.4mm (0.96in)
SHAFT LENGTH	42mm (1.65in)
SPEED (NO LOAD)	3000~4900 RPM
POWER (AT MAX EFF)	0.55~1.18W
TORQUE (AT MAX EFF)	15.0~24.0 g·cm (1.47~2.35 mN·m)
OPERATING TEMPERATURE	-30°C ~+70°C
WEIGHT	51g (1.8oz)

MODEL NUMBER	VOLTAGE (V)		NO LOAD		AT MAXIMUM EFFICIENCY					STARTING		
	OPERATING RANGE	NOMINAL	SPEED RPM	CURRENT A	SPEED RPM	CURRENT A	TORQUE g·cm	TORQUE mN·m	OUTPUT W	TORQUE g·cm	TORQUE mN·m	CURRENT A
PTRF-370C-15370	3.0~12.0	12.0	5600	0.025	4800	0.160	24.0	2.35	1.18	186.0	18.2	1.06
PTRF-370C-12560	4.0~12.0	12.0	3700	0.018	3000	0.090	20.0	1.96	0.62	125.0	12.3	0.46
PTRF-370C-13350	3.0~12.0	9.0	4200	0.025	3600	0.110	15.0	1.47	0.55	112.0	11.0	0.64
		12.0	5600	0.030	4900	0.140	20.0	1.96	1.01	150.0	14.7	0.85

