

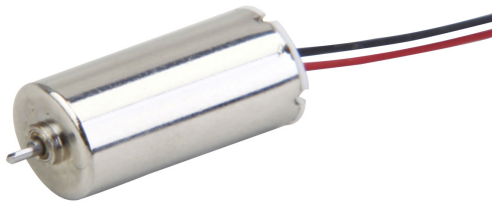
PT0614-111-Q/PT0615-111-Q PT0713-111-Q

CORELESS DC MICRO MOTOR

6D x 14mmL (0.24D x 0.55inL)

6D x 15mmL (0.24D x 0.59inL)

7D x 13mmL (0.28D x 0.51inL)



VOLTAGE	1.5~3.4V
HOUSING LENGTH	13.0~15.0mm (0.51~0.59in)
DIAMETER	6.0~7.0mm (0.24~0.28in)
SHAFT LENGTH	15.5~18.1mm (0.61~0.71in)
SPEED (NO LOAD)	8500~48000 RPM
CURRENT (NO LOAD)	10~90mA
OPERATING TEMPERATURE	-20°C ~+60°C

MODEL NUMBER	RATED VOLTAGE		NO LOAD		RATED		
	NOMINAL		SPEED	CURRENT	SPEED	CURRENT	LOAD
	V		RPM	mA	RPM	mA	g-cm
PT0614-111-Q	3.4		38000	70	24000	380	2.5
PT0615-111-Q	3.2		48000	90	26500	750	2.5
PT0713-111-Q	1.5		8500	10	5000	30	0.5

UNIT: mm

