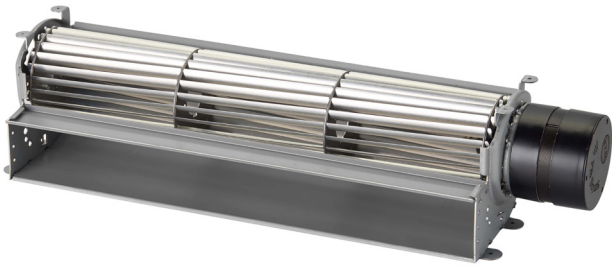


JQF3-060A

J SERIES DC CROSSFLOW FAN



VOLTAGE	24V
BEARINGS	Ball Bearings
MOTOR	DC Brushless Type 3-phase
IMPELLER	Aluminum Alloy
LENGTH (C)	Min 6.7in (170mm), Max 16.9in (430m)
AIRFLOW	64~198 CFM (1.8~5.6 m³/min)
OPERATING TEMP	0°C~45°C
OPERATING LIFE	30,000 hours @ 40°C

Model Number		inches (mm)				V	A	RPM	Pressure (P)		Airflow (Q)		dBA	g
		A	B	C	D				mmAq	inH ₂ O	m³/min	CFM		
JQF3-06012A24-3B	①	4.7 (120)	5.1 (130)	6.7 (170)	1.5 (38)	24	0.24	2000	6.4	0.25	1.8	64	49	400
JQF3-06018A24-3B	②	7.1 (180)	7.5 (190)	9.1 (230)	1.5 (38)	24	0.28	1600	4.6	0.18	2.2	78	44	570
JQF3-06024A24-3B	③	9.4 (240)	9.8 (250)	12.2 (310)	2.2 (56)	24	0.51	2000	6.1	0.24	3.9	138	49	790
JQF3-06030A24-3B	④	11.8 (300)	12.2 (310)	14.6 (370)	2.2 (56)	24	0.59	1850	5.5	0.22	4.7	166	47	860
JQF3-06036A24-3B	⑤	14.2 (360)	14.6 (370)	16.9 (430)	2.2 (56)	24	0.66	1750	5.3	0.21	5.6	198	46	950

