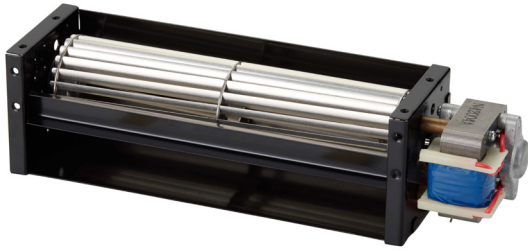


# JE-050A

## J SERIES AC CROSSFLOW FAN



VOLTAGE	120V, 230V
BEARINGS	Ball Bearings
MOTOR	AC Shaded Pole Type 1ø 2p
IMPELLER	Aluminum Alloy
LENGTH (C)	Min 6.4in (162mm), Max 17.2in (437mm)
AIRFLOW	24~116 CFM (0.7~3.3 m³/min)
OPERATING TEMP	0°C~45°C
OPERATING LIFE	30,000 hours @ 40°C

Model Number	inches (mm)			V	Hz	A	W	RPM	Pressure (P)		Airflow (Q)		dBA	g
	A	B	C						mmAq	inH <sub>2</sub> O	m³/min	CFM		
JE-05009A12	3.9	4.3	6.4	120	50/60	0.15/0.13	11/10	2300/2400	2.7/3.6	0.11/0.14	0.7/0.8	24/28	36/37	610
JE-05009A23	(98)	(108)	(162)	230	50/60	0.09/0.07	11/10	2300/2400	2.7/3.6	0.11/0.14	0.7/0.8	24/28	36/37	610
JE-05019A12	7.8	8.2	10.5	120	50/60	0.23/0.21	18/16	2000/1600	3.1/3.7	0.12/0.15	1.9/1.7	67/60	36/33	770
JE-05019A23	(198)	(208)	(267)	230	50/60	0.10/0.09	14/13	1900/1400	3.1/3.6	0.12/0.14	1.8/1.6	63/56	35/32	770
JE-05029A12	11.7	12.1	14.8	120	50/60	0.35/0.33	24/24	2200/1800	3.7/4.3	0.15/0.17	3.3/2.5	116/88	41/37	1100
JE-05029A23	(298)	(308)	(377)	230	50/60	0.15/0.14	21/20	2100/1500	3.7/4.1	0.15/0.16	3.3/2.3	116/81	41/35	1100
JE-05035A12	14.1	14.5	17.2	120	50/60	0.35/0.33	23/23	2100/1500	3.7/4.3	0.15/0.17	3.1/2.9	110/103	41/36	1200
JE-05035A23	(358)	(368)	(437)	230	50/60	0.15/0.14	20/19	1900/1300	3.5/4.0	0.14/0.16	3.0/2.6	110/92	40/34	1200

