



# PTA9238-E

REVERSE FLOW SERIES  
DYNAMIC 2-WAY AIR VENTILATION

92 x 38mm

(3.62 x 1.50in)

12V

42 CFM (1.20 m<sup>3</sup>/min)

Ball Bearings

Lead Wires: UL1007 (+) Red; (-) Black, AWG 24

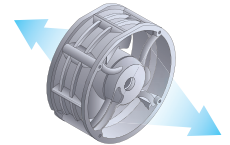
Operating Temperature: -40°C ~ +80°C

Operating Life: 50,000 hours @25°C

Tachometer (Frequency Generator)

PWM Speed Control

CE, RoHS



Model Number	Voltage (V)	Range (VDC)	Current (A)	Power (W)	Speed (RPM)	Airflow (Q) (CFM)	Airflow (Q) (m <sup>3</sup> /min)	Pressure (P) (inH <sub>2</sub> O)	Pressure (P) (mmAq)	Noise (dBA)
PTA9238H12B-E	12	7.5~13.5	0.14	1.68	5500	42.4	1.20	0.59	15.0	43.8

