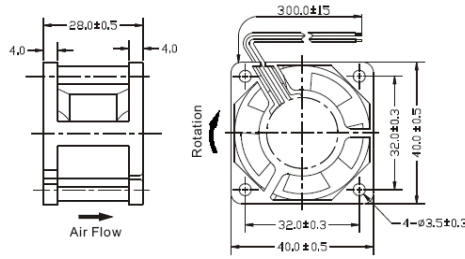


# DC Fan

## RD4028 Series

40 x 40 x 28mm (1.57 x 1.57 x 1.1in)



Unit: mm

Dimensions are in millimeters.



PART NO.	BEARINGS ●=Ball ○=Sleeve	VOLTAGE (V)	RANGE (VDC)	CURRENT (A)	SPEED (RPM)	AIR FLOW (Q) (m <sup>3</sup> /min)	AIR FLOW (Q) (CFM)	PRESSURE (P) (mmAq)	PRESSURE (P) (inH <sub>2</sub> O)	NOISE (dBA)
RDH4028B5	●	5	3.5~5.75	0.35	7500	0.26	9.4	6.0	0.23	32
RDH4028S5	○	5	3.5~5.75	0.35	7500	0.26	9.4	6.0	0.23	32
RDM4028B5	●	5	3.5~5.75	0.30	6500	0.23	8.2	4.7	0.18	28
RDM4028S5	○	5	3.5~5.75	0.30	6500	0.23	8.2	4.7	0.18	28
RDL4028B5	●	5	3.5~5.75	0.22	5000	0.17	6.1	3.5	0.14	23
RDL4028S5	○	5	3.5~5.75	0.22	5000	0.17	6.1	3.5	0.14	23
RDH4028B	●	12	6.0~13.8	0.20	8800	0.31	11.2	8.1	0.32	36
RDH4028S	○	12	6.0~13.8	0.20	8800	0.31	11.2	8.1	0.32	36
RDM4028B	●	12	6.0~13.8	0.18	8000	0.28	10.1	6.8	0.26	33
RDM4028S	○	12	6.0~13.8	0.18	8000	0.28	10.1	6.8	0.26	33
RDL4028B	●	12	6.0~13.8	0.12	5000	0.17	6.1	3.5	0.14	23
RDL4028S	○	12	6.0~13.8	0.12	5000	0.17	6.1	3.5	0.14	23
RDH4028B2	●	24	12~27.6	0.16	8800	0.31	11.2	8.1	0.32	36
RDH4028S2	○	24	12~27.6	0.16	8800	0.31	11.2	8.1	0.32	36
RDM4028B2	●	24	12~27.6	0.12	8000	0.28	10.1	6.8	0.26	33
RDM4028S2	○	24	12~27.6	0.12	8000	0.28	10.1	6.8	0.26	33
RDL4028B2	●	24	12~27.6	0.09	5000	0.17	6.1	3.5	0.14	23
RDL4028S2	○	24	12~27.6	0.09	5000	0.17	6.1	3.5	0.14	23

Performance Curves	Electrical Specifications
<p>Pressure (mmH<sub>2</sub>O) vs Air Flow (CFM) graph showing curves for models D, H, M, and L. The y-axis ranges from 0 to 7 mmH<sub>2</sub>O, and the x-axis ranges from 0 to 10 CFM.</p>	<p>Dielectric Strength: 500VAC (1mA/1min) or 600VAC (2 sec)</p> <p>Insulation Resistance: &gt;10MΩ</p> <p>Motor: Brushless DC with permanent magnet</p> <p>Tolerances: +/-10% on rated current and speed</p>
	<p>Frame to lead wires</p> <p>At 500VDC between frame and (+/-) lead wires</p> <p>Power consumption of sleeve bearing may be up to 10% higher than ball bearing.</p>
	Mechanical Specifications
	<p>Airflow Direction: Air over struts</p> <p>Frame: Thermoplastic PBT (GF 30%), Class UL94V-0</p> <p>Impeller: Thermoplastic PBT (GF 15%), Class UL94V-0</p> <p>Lead Wires (L): UL1007, 24AWG/260mm; Red(+); Black (-)</p> <p>Weight: 36g (1.27oz)</p> <p>Rotation: Counterclockwise viewed from impeller</p> <p>Life Expectancy: Ball: 50,000 hrs. @25°C T<sub>A</sub> (Sleeve: 30,000 hrs. @25°C T<sub>A</sub>)</p>
	Environmental Specifications
<p>Operating Temperature: -10 to +70°C</p> <p>Storage Temperature: -40 to +80°C</p> <p>Acoustical: Anechoic chamber at free air.</p>	<p>At 35-85% relative humidity</p> <p>At 35-85% relative humidity</p> <p>Measured at 1 meter from the fan and perpendicular to the direction of the airflow.</p>
Optional Features	
<p>Auto-Start (AS) - standard</p> <p>Tachometer</p> <p>Rotation Detection</p>	<p>Protects fan if obstructed by an external object.</p> <p>Informs user of fan running speed.</p> <p>Detects whether fan is running or has stopped.</p>

Specifications subject to change without notice.